



# Sheraton Grand

MIRAGE RESORT GOLD COAST

**SHERATON GRAND MIRAGE  
RESORT, GOLD COAST**

71 Sea World Drive

Main Beach, QLD, 4217 Australia

T 61 7 5577 0000

F 61 7 5591 2299

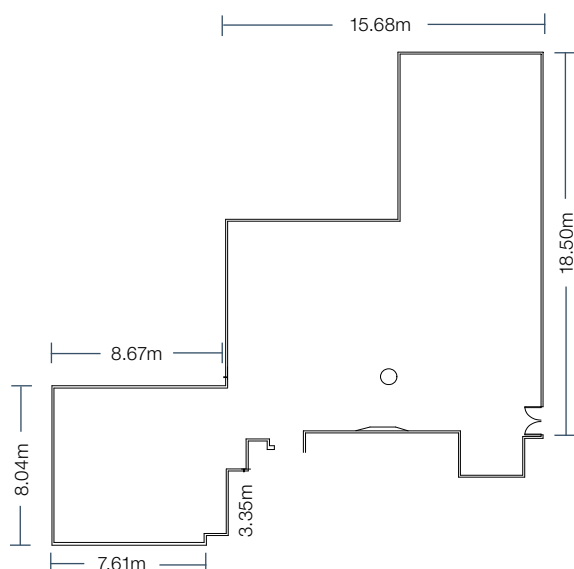
[sheratonmiragegoldcoast.com.au](http://sheratonmiragegoldcoast.com.au)



# Horizons

## ROOM DIMENSION AND SEATING CAPACITY

	LENGTH	WIDTH	HEIGHT	SQUARE METRES	THEATRE	CABARET (8 PAX)	BANQUET	RECEPTION	CLASSROOM	U-SHAPE
HORIZONS	18.5	16.5	2.95	278	140	104	160	220	80	-



## TECHNICAL SPECIFICATIONS

Horizons is an iconic Gold Coast venue with floor to ceiling glass windows capturing the true beauty of Sheraton Mirage overlooking sparkling resort lagoons and with spectacular ocean views, perfect for any special event including cocktail parties or weddings.

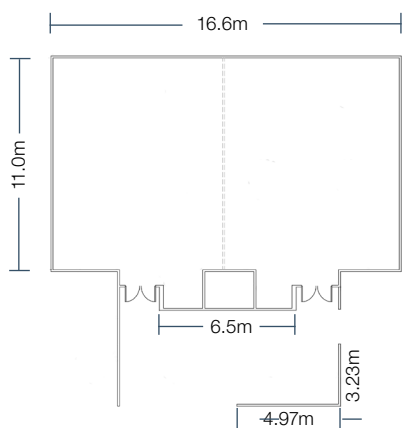
The Horizons venue is capable of catering to a variety of AV options including a high performance Panasonic projector, a 6.6ft pull-up screen, 70' HD LED Monitors, a fast fold (10.66' x 6') or tripod screen (8'), or 5 x black panel draping with metal rigging for screening windows, as well as PA system and much more...



# Lagoon

## ROOM DIMENSION AND SEATING CAPACITY

	LENGTH	WIDTH	HEIGHT	SQUARE METRES	THEATRE	CABARET (8 PAX)	BANQUET	RECEPTION	CLASSROOM	U-SHAPE
LAGOON	11	17	3.0	187	150	88	120	120	80	40
LAGOON SECTION 1	11	9	3.0	93	70	40	50	60	40	21
LAGOON SECTION 2	11	9	3.0	93	70	40	50	60	40	21



## TECHNICAL SPECIFICATIONS

The Lagoon Room is a medium size venue which can be split into two meeting areas each sitting up to 70 people in theatre style.

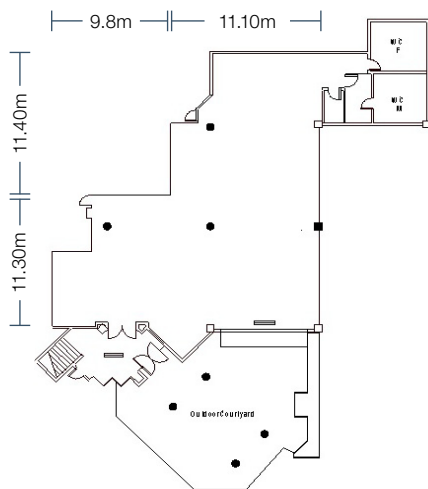
The Lagoon Room features three retractable widescreen format projection screens (2545mm x 1430mm), installed high performance Panasonic projectors and a versatile vision patching system to provide ultra-sharp projection with a superior level of brightness and clarity. Additionally the room includes a high quality centralised audio system, ceiling equipment rigging capability, ample 3 phase power and fully adjustable lighting facilities.



# Pandanus

## ROOM DIMENSION AND SEATING CAPACITY

	LENGTH	WIDTH	HEIGHT	SQUARE METRES	THEATRE	CABARET (8 PAX)	BANQUET	RECEPTION	CLASSROOM	U-SHAPE
PANDANUS	23	15	3.6	347	150	144	180	250	50	35
COURTYARD	-	-	-	165	-	-	40	100	-	-



## TECHNICAL SPECIFICATIONS

The newly created Pandanus Room is equally flexible as a contemporary venue suitable for cocktail receptions for up to 250 guests and as a stylish meeting venue seating up to 150 guests in theatre style.

The Pandanus Room features a retractable widescreen format projection screen (3985mm x 2240mm), installed high performance Panasonic projector and a versatile vision patching system to provide ultra-sharp projection with a superior level of brightness and clarity. Additionally the room includes a high quality centralised audio system, ceiling equipment rigging capability, ample 3 phase power and fully adjustable lighting facilities.

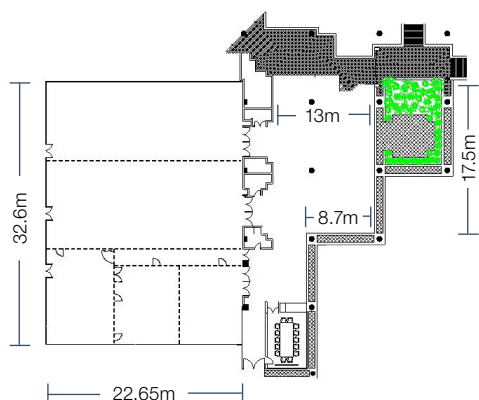




# Mirage Grand Ballroom

## ROOM DIMENSION AND SEATING CAPACITY

	LENGTH	WIDTH	HEIGHT	SQUARE METRES	THEATRE	CABARET (8 PAX)	BANQUET	RECEPTION	CLASSROOM	U-SHAPE
<b>MIRAGE GRAND BALLROOM</b>	23	33	5.5	759	1000	440	550	1000	550	100
<b>BALLROOM SECTION 1</b>	23	10	5.5	230	260	120	150	250	140	60
<b>BALLROOM SECTION 2</b>	23	11	5.5	253	260	120	150	280	140	60
<b>BALLROOM SECTION 3</b>	23	12	5.5	276	300	120	180	310	140	60
<b>BALLROOM SECTION 4</b>	10	8	5.5	80	50	32	40	60	40	29
<b>BALLROOM SECTION 5</b>	10	8	5.5	80	50	32	40	60	40	29
<b>BALLROOM SECTION 6</b>	12	8	5.5	96	80	48	60	75	50	35



### TECHNICAL SPECIFICATIONS

The Mirage Grand Ballroom seats up to 1,000 people theatre style and can be divided into five separate event rooms. The ballroom offers direct access for vehicle displays and has fully integrated state-of-the-art lighting and audio-visual systems.

The Mirage Grand Ballroom comes equipped with four retractable widescreen format projection screens (4880mm x 2745mm), a cutting edge digital fibre infrastructure, high definition Panasonic projectors and a host of intelligent audio visual design features combining to provide ultra-sharp projection with a superior level of brightness and clarity.

The fully centralised lighting system includes fifty-four installed intelligent fixtures controlled by a world class touch screen interface to provide a myriad of special effects and colour combinations. Digital audio consoles and speaker systems provide superior quality sound reinforcement.

The Mirage Grand Ballroom boasts a fully installed perimeter drape track system and this combines with the numerous automated ceiling hoists and bars to provide a flexible and versatile rigging environment for conferences, gala events, exhibitions and more.

# Boardrooms

## ROOM DIMENSIONS AND SEATING CAPACITY

	LENGTH	WIDTH	HEIGHT	SQUARE METRES	THEATRE	CLASSROOM	BOARDROOM	U-SHAPE
MIRAGE	7	6	3	42	-	-	16	-
EXECUTIVE	6.4	4	2.7	25	-	-	14	-
CHAIRMANS	6.4	4.3	2.7	27	-	-	10	-
DIRECTORS	7.5	5	3	38	20	12	20	9
GARDEN TERRACE	5.6	4	2.4	22	-	-	12	-

## TECHNICAL SPECIFICATIONS

Sheraton Mirage Resort & Spa's five Boardrooms are designed to encourage collaboration with settings for 12 to 16 people. With the very latest in audio visual equipment installed for your convenience.

The Mirage Boardroom and Executive Boardroom are both equipped with a retractable widescreen format projection screen (2545mm x 1430mm), installed high performance Panasonic projector and a versatile vision patching system to provide ultra-sharp projection with a superior level of brightness and clarity.



MIRAGE



EXECUTIVE



CHAIRMANS

The Chairmans Boardroom features a retractable widescreen format projection screen (1810mm x 1130mm), installed high performance Panasonic projector and a versatile vision patching system to provide ultra-sharp projection with a superior level of brightness and clarity. Additionally the room includes a high quality centralised audio system and a 60" Samsung LCD High Definition monitor.



GARDEN TERRACE



DIRECTORS

The Directors Boardroom features a retractable widescreen format projection screen (2545mm x 1430mm), installed high performance Panasonic projector and a versatile vision patching system to provide ultra-sharp projection with a superior level of brightness and clarity. Additionally the room includes a high quality centralised audio system.



Event Staging Manager  
 t – 61 7 5528 1875  
 e – [tbutterfield@stagingconnections.com](mailto:tbutterfield@stagingconnections.com)